

# CARTER-COCHRAN BUILDINGS

6551 - 6573 Cochran Road, Solon, Ohio 44139

For Lease



**BOB GARBER, SIOR** / Principal / bgarber@crescorealestate.com / +1 216 525 1467

**MATTHEW M. BEESLEY** / Principal / mbeesley@crescorealestate.com / +1 216 525 1466

**SIMON CAPLAN, SIOR** / Principal / scaplan@crescorealestate.com / +1 216 525 1472

**ELIOT KIJEWski, SIOR** / Senior Vice President / ekijewski@crescorealestate.com / +1 216 525 1466

3 Summit Park Drive, Suite 200  
Cleveland, Ohio 44131  
Main +1 216 520 1200  
Fax +1 216 520 1828  
**crescorealestate.com**





# CARTER-COCHRAN BUILDINGS

6551 - 6573 Cochran Road, Solon, Ohio 44139

For Lease

## AVAILABLE SPACE

2,700 SF to 8,100 SF

## WAREHOUSE RATE

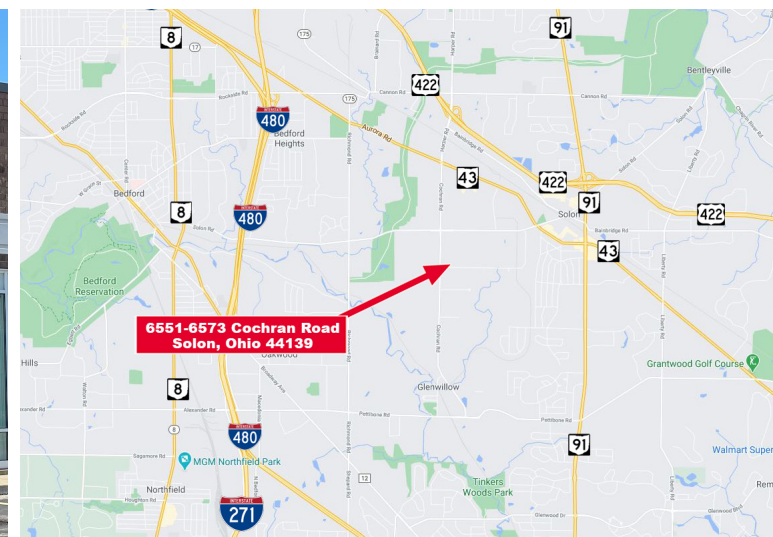
\$5.00/SF

## OFFICE RATE

\$11.00/SF

## COMMENTS

- Office/warehouse space available
- Well maintained property with appealing landscape, new windows and new roof
- Ready for immediate occupancy in the heart of the Solon industrial area
- Highly visible location just minutes from U.S. 422, I-480, I-271 with easy access (less than 30 minutes) to Cleveland Hopkins International Airport and both downtown Cleveland and Akron
- Situated in the middle of Solon's industrial community, the property is easily accessed from Twinsburg and Hudson to the south and Chagrin Falls, Pepper Pike, Orange and Beachwood to the north.
- Minutes to shopping and hotels, employees will benefit from the close proximity to numerous restaurants such as Chick-fil-A, Chipotle, Yours Truly, Panera, Burger Fresh and Rusty Bucket



**BOB GARBER, SIOR** / Principal / bgarber@crescorealestate.com / +1 216 525 1467

**MATTHEW M. BEESLEY** / Principal / mbeesley@crescorealestate.com / +1 216 525 1466

**SIMON CAPLAN, SIOR** / Principal / scaplan@crescorealestate.com / +1 216 525 1472

**ELIOT KIJEWski, SIOR** / Senior Vice President / ekijewski@crescorealestate.com / +1 216 525 1466

3 Summit Park Drive, Suite 200

Cleveland, Ohio 44131

Main +1 216 520 1200

Fax +1 216 520 1828

**crescorealestate.com**



# CARTER-COCHRAN BUILDINGS

6551 - 6573 Cochran Road, Solon, Ohio 44139

For Lease

6551 - 6571



## PROPERTY SPECIFICATIONS

YEAR BUILT	1989
TOTAL AVAILABLE	0 SF
DIVISIBLE	2,700 SF / 2,864 SF
RENTAL RATES	Negotiable
HVAC	24/7 tenant control
PARKING	Abundant
BUILDING HOURS/ACCESS	Tenant will have 24/7 access
TENANT SIGNAGE	Building signage & monument sign

## AVAILABLE UNITS

ADDRESS	TOTAL SF	OFFICE SF	WHSE. SF	CLEAR HT	TRUCK DOCKS	DRIVE-IN DOORS
---------	----------	-----------	----------	----------	-------------	----------------

FULLY LEASED						
--------------	--	--	--	--	--	--

**BOB GARBER, SIOR** / Principal / bgarber@crescorealestate.com / +1 216 525 1467

**MATTHEW M. BEESLEY** / Principal / mbeesley@crescorealestate.com / +1 216 525 1466

**SIMON CAPLAN, SIOR** / Principal / scaplan@crescorealestate.com / +1 216 525 1472

**ELIOT KIJEWski, SIOR** / Senior Vice President / ekijewski@crescorealestate.com / +1 216 525 1466

3 Summit Park Drive, Suite 200  
Cleveland, Ohio 44131  
Main +1 216 520 1200  
Fax +1 216 520 1828  
**crescorealestate.com**



# CARTER-COCHRAN BUILDINGS

6551 - 6573 Cochran Road, Solon, Ohio 44139

For Lease

6573



## PROPERTY SPECIFICATIONS

YEAR BUILT	1989
AVAILABLE	9,247 SF
RENTAL RATES	Negotiable
HVAC	24/7 tenant control
PARKING	Abundant
BUILDING HOURS/ACCESS	Tenant will have 24/7 access
TENANT SIGNAGE	Building signage and monument sign

## AVAILABLE UNITS

UNIT	TOTAL SF	OFFICE SF	WHSE. SF	TRUCK DOCKS	DRIVE-IN DOORS
6573-L	2,182 SF	-0-	4,365 SF	One (1)	-0-
6573-O	8,100 SF	-0-	8,100 SF	Three (3)	-0-

**BOB GARBER, SIOR** / Principal / bgarber@crescorealestate.com / +1 216 525 1467

**MATTHEW M. BEESLEY** / Principal / mbeesley@crescorealestate.com / +1 216 525 1466

**SIMON CAPLAN, SIOR** / Principal / scaplan@crescorealestate.com / +1 216 525 1472

**ELIOT KIJEWski, SIOR** / Senior Vice President / ekijewski@crescorealestate.com / +1 216 525 1466

3 Summit Park Drive, Suite 200  
Cleveland, Ohio 44131  
Main +1 216 520 1200  
Fax +1 216 520 1828  
**crescorealestate.com**



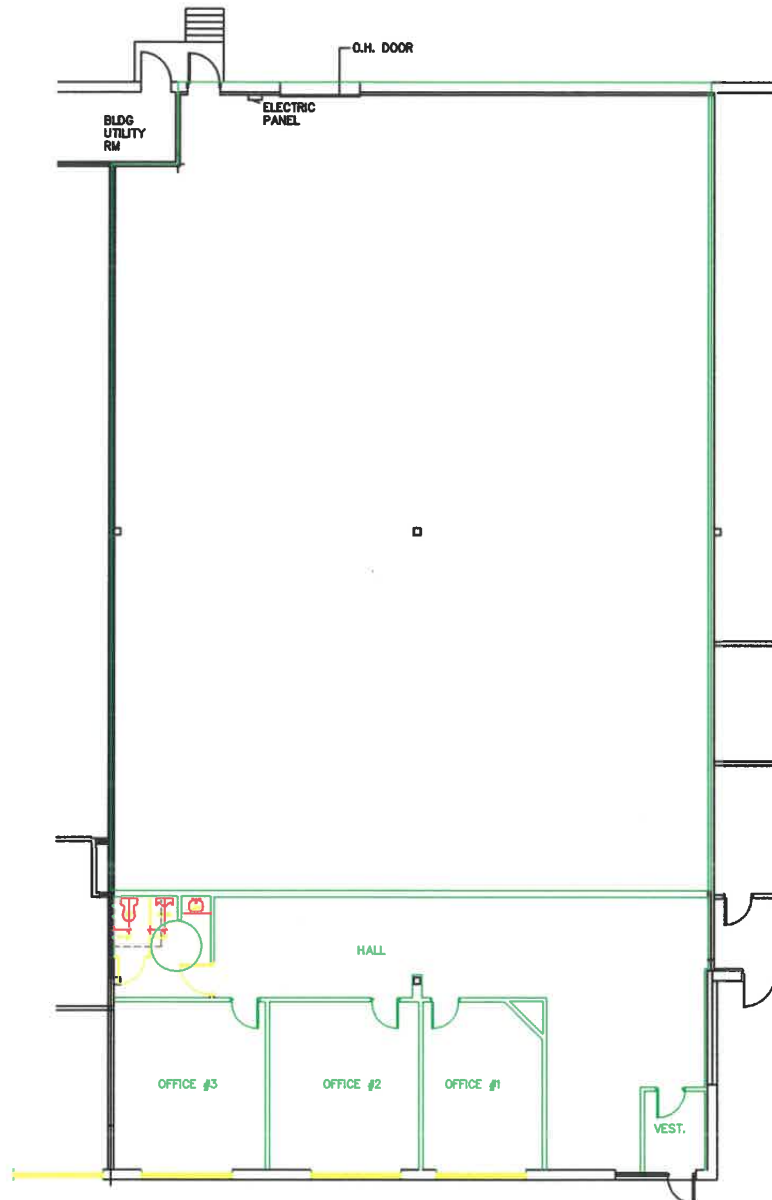


# CARTER-COCHRAN BUILDINGS

6551 - 6573 Cochran Road, Solon, Ohio 44139

For Lease

## SUITE L



**BOB GARBER, SIOR** / Principal / bgarber@crescorealestate.com / +1 216 525 1467

**MATTHEW M. BEESLEY** / Principal / mbeesley@crescorealestate.com / +1 216 525 1466

**SIMON CAPLAN, SIOR** / Principal / scaplan@crescorealestate.com / +1 216 525 1472

**ELIOT KIJEWski, SIOR** / Senior Vice President / ekijewski@crescorealestate.com / +1 216 525 1466

3 Summit Park Drive, Suite 200

Cleveland, Ohio 44131

Main +1 216 520 1200

Fax +1 216 520 1828

[crescorealestate.com](http://crescorealestate.com)



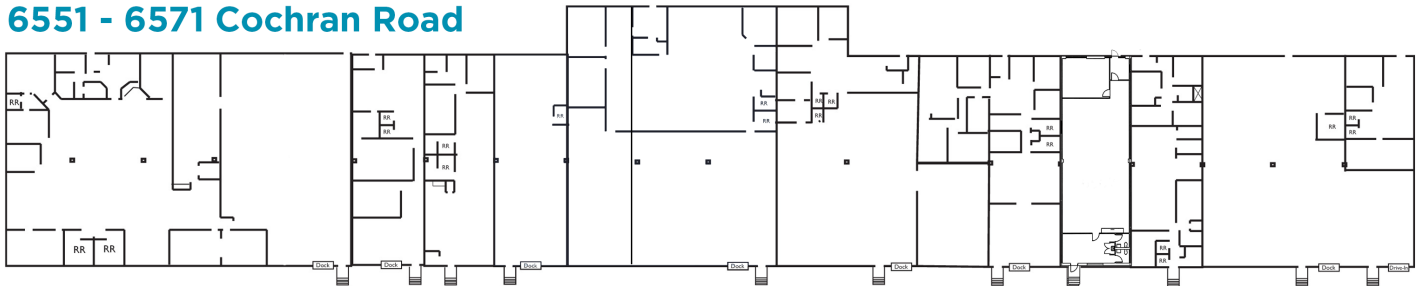
# CARTER-COCHRAN BUILDINGS

6551 - 6573 Cochran Road, Solon, Ohio 44139

For Lease

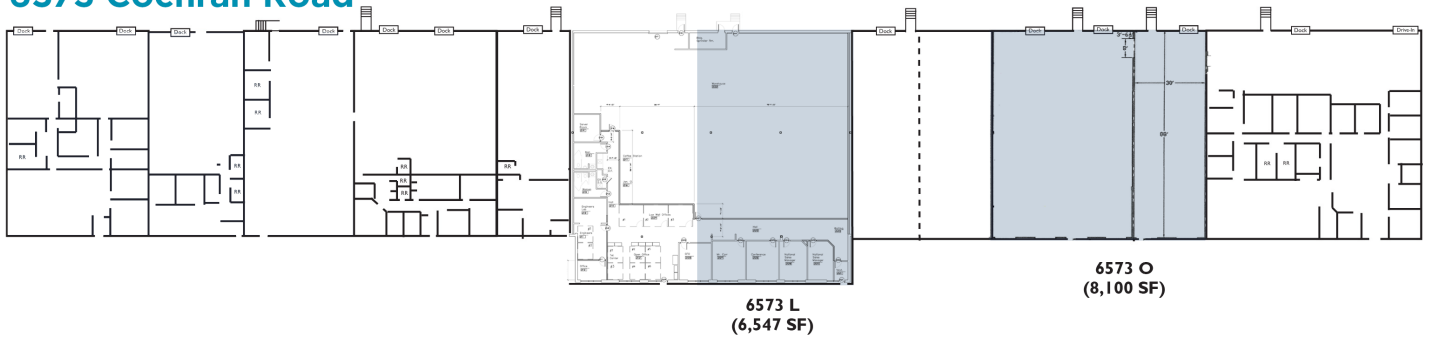
FULLY LEASED

6551 - 6571 Cochran Road



All Concrete  
(Truck Court)

6573 Cochran Road



Available Units

**BOB GARBER, SIOR** / Principal / bgarber@crescorealestate.com / +1 216 525 1467

**MATTHEW M. BEESLEY** / Principal / mbeesley@crescorealestate.com / +1 216 525 1466

**SIMON CAPLAN, SIOR** / Principal / scaplan@crescorealestate.com / +1 216 525 1472

**ELIOT KIJEWski, SIOR** / Senior Vice President / ekijewski@crescorealestate.com / +1 216 525 1466

3 Summit Park Drive, Suite 200

Cleveland, Ohio 44131

Main +1 216 520 1200

Fax +1 216 520 1828

[crescorealestate.com](http://crescorealestate.com)

Independently Owned and Operated / A Member of the Cushman & Wakefield Alliance

Cushman & Wakefield Copyright 2021. No warranty or representation, express or implied, is made to the accuracy or completeness of the information contained herein, and same is submitted subject to errors, omissions, change of price, rental or other conditions, withdrawal without notice, and to any special listing conditions imposed by the property owner(s). As applicable, we make no representation as to the condition of the property (or properties) in question. A licensee at Cushman & Wakefield | CRESCO may have an interest in the client entity offering this property for sale.



**CUSHMAN &  
WAKEFIELD**

