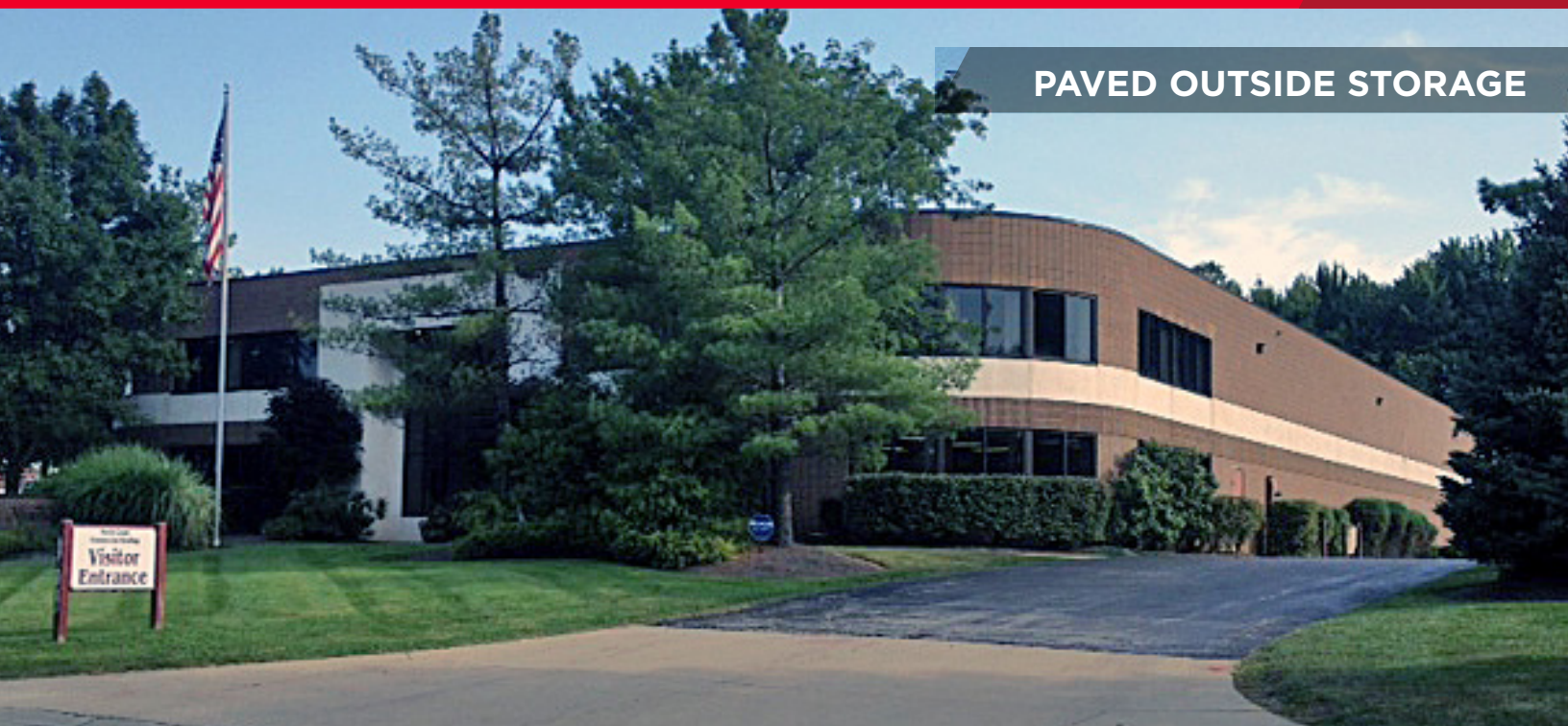
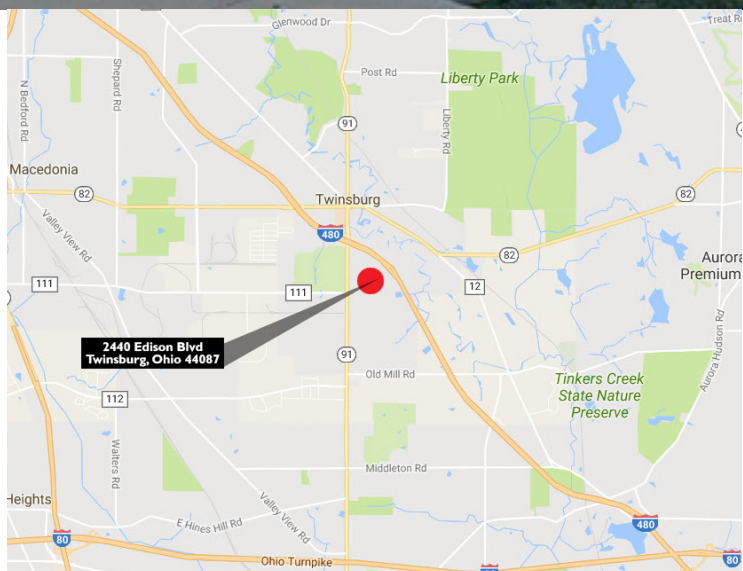


**PAVED OUTSIDE STORAGE**



## Property Specifications

TOTAL SF	28,000 SF
OFFICE SF	8,000 SF
INDUSTRIAL SF	20,000 SF
LAND	2.33 acres
DOCKS	Two (2)
DRIVE-IN DOORS	Four (4) - 14' x 12'
YEAR BUILT	1989
REFURBISHED	2000 & 2017
CEILING HEIGHT	18'
CONSTRUCTION	Split Face Block
LIGHTING	T-8
HEAT	Co-Ray Vac
AIR-CONDITIONED	HVAC - Office
SPRINKLER	Yes



- Excellent condition
- Well-maintained
- Ample paved parking with considerable paved and fenced outside storage

### Matthew Beesley

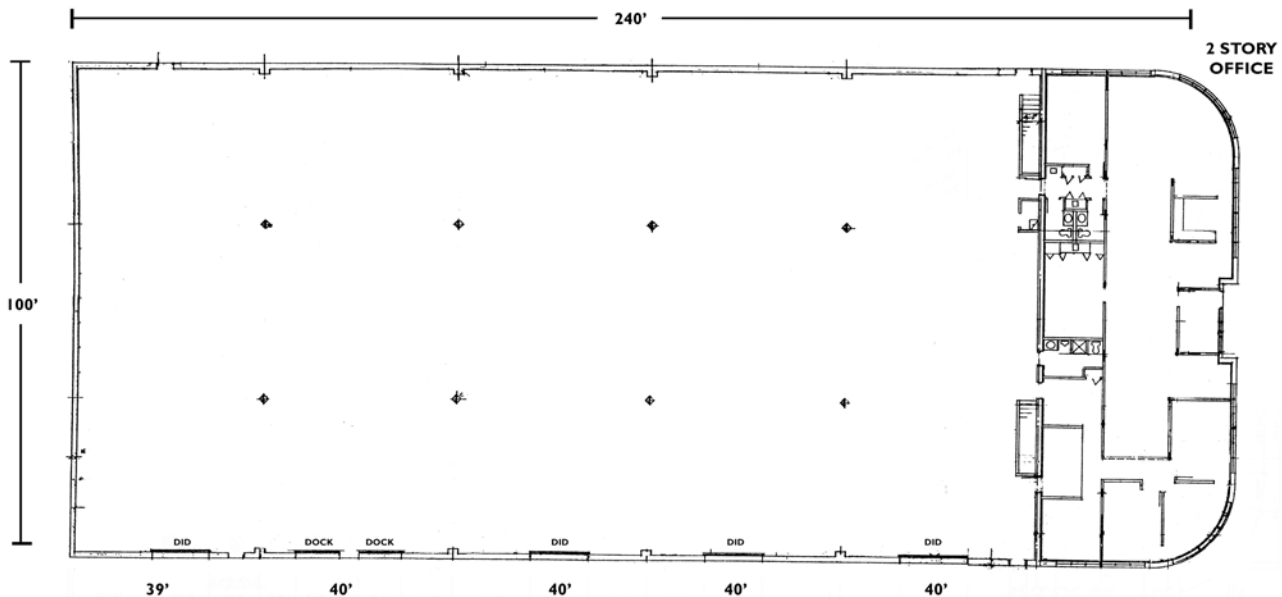
Principal  
216.525.1466  
mbeesley@crescorealestate.com

3 Summit Park Drive  
Suite 200  
Cleveland, Ohio 44131  
Main 216.520.1200  
Fax 216.520.1828  
**crescorealestate.com**

*Independently Owned and Operated / A Member of the Cushman & Wakefield Alliance*

Cushman & Wakefield Copyright 2015. No warranty or representation, express or implied, is made to the accuracy or completeness of the information contained herein, and same is submitted subject to errors, omissions, change of price, rental or other conditions, withdrawal without notice, and to any special listing conditions imposed by the property owner(s). As applicable, we make no representation as to the condition of the property (or properties) in question.

## Aerial & Floorplan



**Matthew Beesley**  
Principal  
216.525.1466  
mbeesley@crescorealestate.com

3 Summit Park Drive  
Suite 200  
Cleveland, Ohio 44131  
Main 216.520.1200  
Fax 216.520.1828  
**crescorealestate.com**

*Independently Owned and Operated / A Member of the Cushman & Wakefield Alliance*

Cushman & Wakefield Copyright 2015. No warranty or representation, express or implied, is made to the accuracy or completeness of the information contained herein, and same is submitted subject to errors, omissions, change of price, rental or other conditions, withdrawal without notice, and to any special listing conditions imposed by the property owner(s). As applicable, we make no representation as to the condition of the property (or properties) in question.



## Photos



*Independently Owned and Operated / A Member of the Cushman & Wakefield Alliance*

Cushman & Wakefield Copyright 2015. No warranty or representation, express or implied, is made to the accuracy or completeness of the information contained herein, and same is submitted subject to errors, omissions, change of price, rental or other conditions, withdrawal without notice, and to any special listing conditions imposed by the property owner(s). As applicable, we make no representation as to the condition of the property (or properties) in question.

Profile 1 of 1

## Summary (34016)



### 2440 EDISON BLVD. 2440 Edison Blvd. Twinsburg, OH 44087

<b>County:</b>	Summit
<b>Market:</b>	SE-Z2
<b>Sub Market:</b>	Summit County North/Portage County
<b>Land Size (Acres)</b>	2.33 Acres
<b>Available SF:</b>	28,000 SF
<b>Building SF:</b>	28,000 SF
<b>Industrial SF:</b>	20,000 SF
<b>Office SF:</b>	8,000 SF

#### General Listing/Transaction Information

<b>Asking Rate:</b>	\$5.75 NNN
<b>Transaction Type:</b>	Lease
<b>Total Additional Rent:</b>	\$1.40

#### Parking

<b>Parking Comments:</b>	Ample paved parking with considerable paved outside storage
--------------------------	---

#### Loading & Doors

<b># GL/DID:</b>	4
<b>GL/DID Dim. (H x W)</b>	14x12
<b>#DH/Truck-level Doors:</b>	2
<b>Total Doors:</b>	6

#### Contacts

<b>Listing Broker(s)</b>	Matthew Beesley Principal 216.525.1466 mbeesley@crescorealestate.com
--------------------------	---

#### Building

<b>Construction Status:</b>	Existing
<b>Multi-Tenant:</b>	Single-Tenant
<b>Year Built:</b>	1989
<b>Year Refurbished</b>	2000, 2017
<b>ConstructionType:</b>	Split Face Block
<b>Roof Type:</b>	EPDM
<b>Floor Type:</b>	Concrete
<b>Lighting Type:</b>	T-8
<b>Sprinkler:</b>	Yes
<b>Heat:</b>	Co Ray Vac
<b>AC:</b>	HVAC-Office
<b>Ceiling Ht:</b>	18' (Min)

#### Utilities

<b>Gas:</b>	Dominion
<b>Water:</b>	City
<b>Sewer:</b>	City
<b>Power:</b>	400 a 3 p

#### Site

<b>Land SF:</b>	101,495 SF
<b>Parcel Number:</b>	6406568
<b>Zoning:</b>	Industrial
<b>Land Condition:</b>	Excellent

#### Crane

#### Comments

**Listing Comments:** Excellent condition and well maintained.