



NEW TO MARKET

TIER III DATA CENTER FOR LEASE

4150 WEST 150TH STREET CLEVELAND, OHIO

HIGHLIGHTS

- 139,000 S F Immediately Available
- Tier Three Data Center
- Highly Secured Campus
- 2.7 MW N+1 Immediately Available
- Power Expandable
- Concurrently Maintainable Infrastructure

3 Summit Park Drive,
Suite 200
Cleveland, Ohio 44131
Main 216.520.1200
Fax 216.520.1828
crescorealestate.com

©2020 Cushman & Wakefield. All rights reserved. The information contained in this communication is strictly confidential. This information has been obtained from sources believed to be reliable but has not been verified. NO WARRANTY OR REPRESENTATION, EXPRESS OR IMPLIED, IS MADE AS TO THE CONDITION OF THE PROPERTY (OR PROPERTIES) REFERENCED HEREIN OR AS TO THE ACCURACY OR COMPLETENESS OF THE INFORMATION CONTAINED HEREIN, AND SAME IS SUBMITTED SUBJECT TO ERRORS, OMISSIONS, CHANGE OF PRICE, RENTAL OR OTHER CONDITIONS, WITHDRAWAL WITHOUT NOTICE, AND TO ANY SPECIAL LISTING CONDITIONS IMPOSED BY THE PROPERTY OWNER(S). ANY PROJECTIONS, OPINIONS OR ESTIMATES ARE SUBJECT TO UNCERTAINTY AND DO NOT SIGNIFY CURRENT OR FUTURE PROPERTY PERFORMANCE.

TIER III DATA CENTER FOR LEASE

4150 WEST 150TH STREET

Cleveland, Ohio



CUSHMAN &
WAKEFIELD



LOCATION DETAILS

Highly Secured Campus

8 Miles to CBD

Easy Access to I-71 & I-480

3 Miles to Cleveland Hopkins
International Airport

TOTAL SQUARE FEET 187,000 SF

MISSION CRITICAL
SPACE 139,000 SF Immediately Available

UTILITY Dual 34.5 KV Feeders

GENERATORS 9.75 MW N+1
62,000 Gallons Fuel Storage with Transfer
Pumps and Polishing

UPS 2.7 MW N+1 and it's Expandable

CHILLERS 3 York 570-Tons 2N with an
expandable pad

WATER RESERVE
TANK 275,000 Gallon Thermal Energy
Storage Tank



FIBER PROVIDERS

verizon

windstream

Level(3)
COMMUNICATIONS

zayo

Sprint

US SIGNAL

CenturyLink



CUSHMAN &
WAKEFIELD





CUSHMAN &
WAKEFIELD



FIRE SUPPRESSION

Dry Pipe Pre-Action Double Interlock

BUILDING SYSTEM

Automated Logic BAS
Eaton Foreseer EPMS ASCO PLC

CERTIFICATIONS

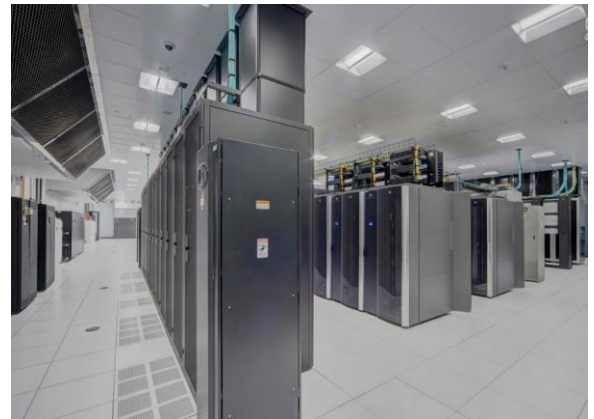
Designed to Meet SSAE-16 SOC 1 & 2
and Fisma Moderate Requirements

SECURITY

24/7 Video Surveillance CCTV
Cameras
Key Cards, Biometric Scanning & Man
Traps
Gated Entrance to Parking

ADDITIONAL FEATURES

1 Freight Elevator
2 Dock High Loading Doors
Tenant Lounge and Kitchenette



CUSHMAN &
WAKEFIELD



TIER III DATA CENTER RESILIENCY

4150 WEST 150TH STREET

Cleveland, Ohio



CUSHMAN &
WAKEFIELD



CONTACT:

CONNOR REDMAN

Sales Associate

+1 (216) 525 1493

credman@crescorealestate.com

DAVID LEB

Senior Sales Associate

+1 (216) 525 1488

dleb@crescorealestate.com

3 Summit Park Drive,
Suite 200
Cleveland, Ohio 44131
Main 216.520.1200
Fax 216.520.1828
crescorealestate.com

©2020 Cushman & Wakefield. All rights reserved. The information contained in this communication is strictly confidential. This information has been obtained from sources believed to be reliable but has not been verified. NO WARRANTY OR REPRESENTATION, EXPRESS OR IMPLIED, IS MADE AS TO THE CONDITION OF THE PROPERTY (OR PROPERTIES) REFERENCED HEREIN OR AS TO THE ACCURACY OR COMPLETENESS OF THE INFORMATION CONTAINED HEREIN, AND SAME IS SUBMITTED SUBJECT TO ERRORS, OMISSIONS, CHANGE OF PRICE, RENTAL OR OTHER CONDITIONS, WITHDRAWAL WITHOUT NOTICE, AND TO ANY SPECIAL LISTING CONDITIONS IMPOSED BY THE PROPERTY OWNER(S). ANY PROJECTIONS, OPINIONS OR ESTIMATES ARE SUBJECT TO UNCERTAINTY AND DO NOT SIGNIFY CURRENT OR FUTURE PROPERTY PERFORMANCE.



CUSHMAN &
WAKEFIELD

