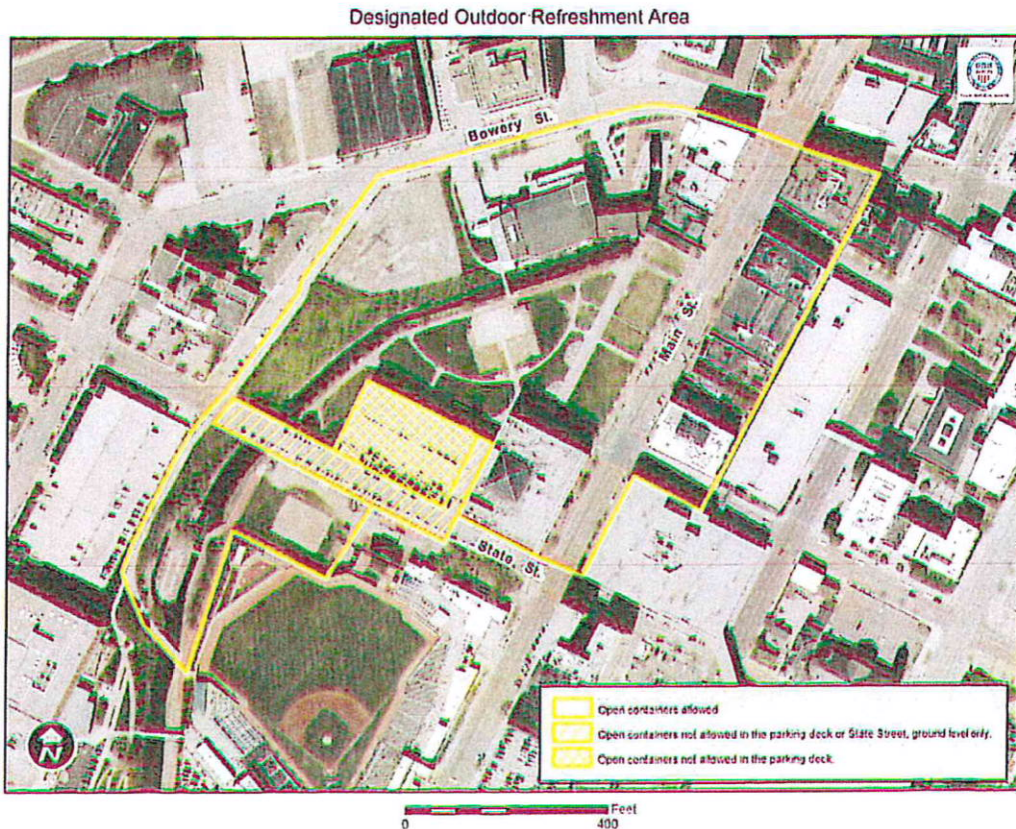


II. BOUNDARIES

- A. In accordance with RC 4301.82(B)(1) and (F)(1)(a), the boundaries of the DORA are graphically depicted below and further described as follows:



- B. The legal description of the DORA is expressed as follows:

Situated in the City of Akron, County of Summit, State of Ohio and being known as part of an area of land bounded by Bowery Street, Main Street, State Street and Vacated Water Street further bounded and described as follows:

Beginning at the intersection of the South face of curb and the Westerly R/W line of Maiden Lane; Thence S 28°07'12" W, a distance of about 757.71 feet, along the West R/W line of Maiden and the existing rear building wall line of #159 S. Main to a point on the North face of the wall of the Polsky Building, which is about the South R/W line of University Ave.; Thence N 62°59'20" W, a distance of about 141.21 feet, along the Southerly R/W line of University and the existing North face of the Polsky Building wall line, to a railroad spike found in the East R/W line of Main Street; Thence S 27°02'27" W, a distance of about 237.91 feet, along the East R/W line of Main and the existing West face of the Polsky Building wall line, to the North face of curb on State Street; Thence N 59°52'08" W, a distance of about 264.90 feet, along the North face of curb, to a point marking the edge of the State Street Bridge Deck; Thence S 27°02'27" W, a