

OMNI BY THE LAKE

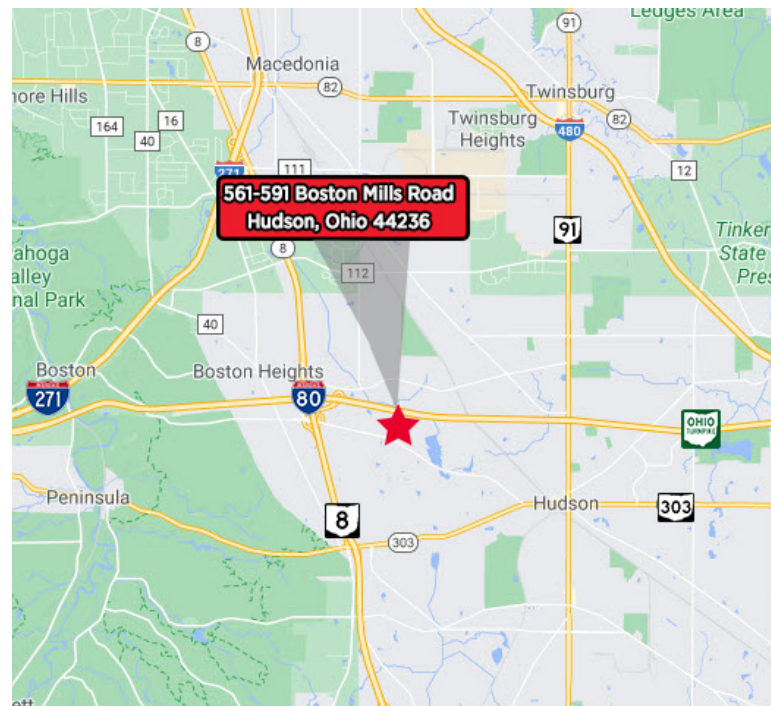


LEASE RATE:

\$13.50 PSF

PROPERTY FEATURES:

- Modern four (4) building complex
- Available suites ranging from 1,131 to 8,281 square feet and are ready for occupancy
- Lease rate includes base year taxes, insurance and CAM charges.
- Immediate access to SR 8 & Ohio Turnpike
- Additional 1.9 acre site available for sale or build-to-suit.





AVAILABLE SPACE:

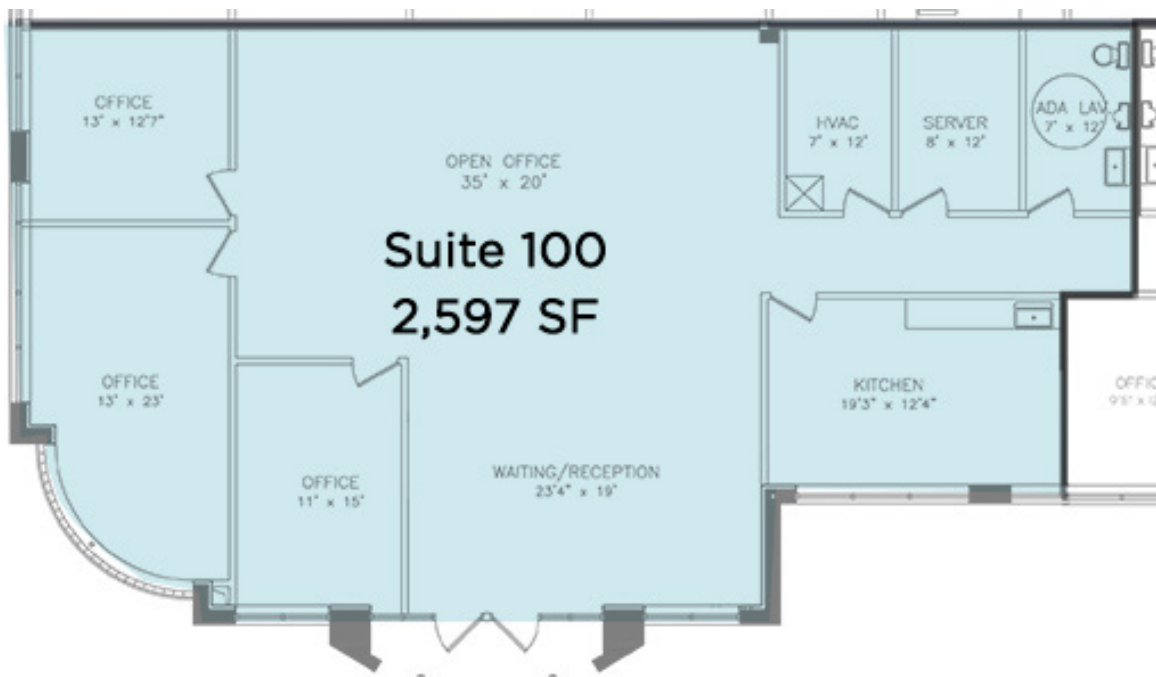
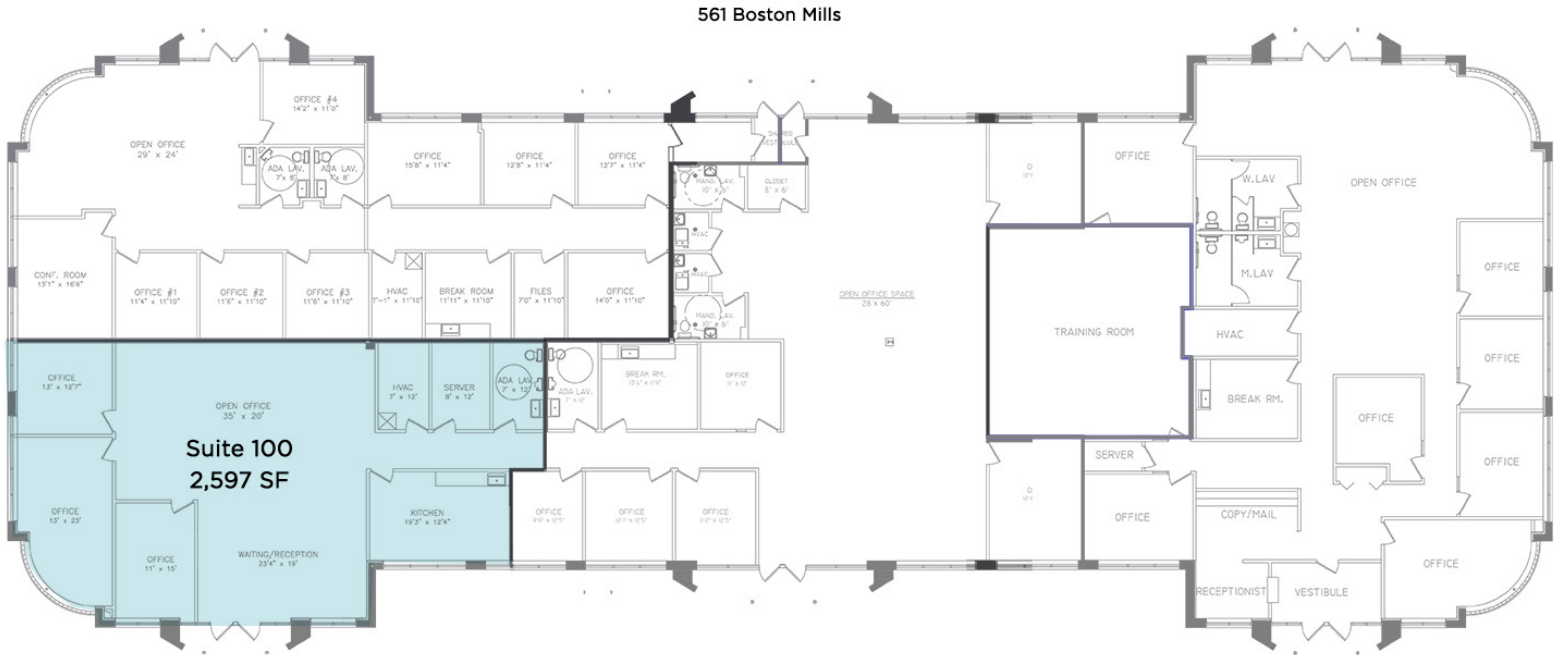
| SUITE | SUITE SF | MAX. CONTIG. SF |
|---------|----------|-----------------|
| 561-100 | 2,597 SF | 2,597 SF |
| 581-100 | 4,157 SF | 8,281 SF |
| 581-300 | 2,253 SF | 8,281 SF |
| 581-400 | 1,271 SF | 8,281 SF |
| 581-500 | 600 SF | 8,281 SF |
| 591-100 | 5,000 SF | 6,131 SF |
| 591-200 | 1,131 SF | 6,131 SF |

561 BOSTON MILLS ROAD

Suite 100

2,597 SF

Available 7/1/2021



581 BOSTON MILLS ROAD

| | | |
|-----------|----------|--------------------|
| Suite 100 | 4,157 SF | Available 1/1/2022 |
| Suite 300 | 2,253 SF | Available 1/1/2022 |
| Suite 400 | 1,271 SF | Available 6/1/2021 |
| Suite 500 | 600 SF | Available 1/1/2022 |

581 Boston Mills

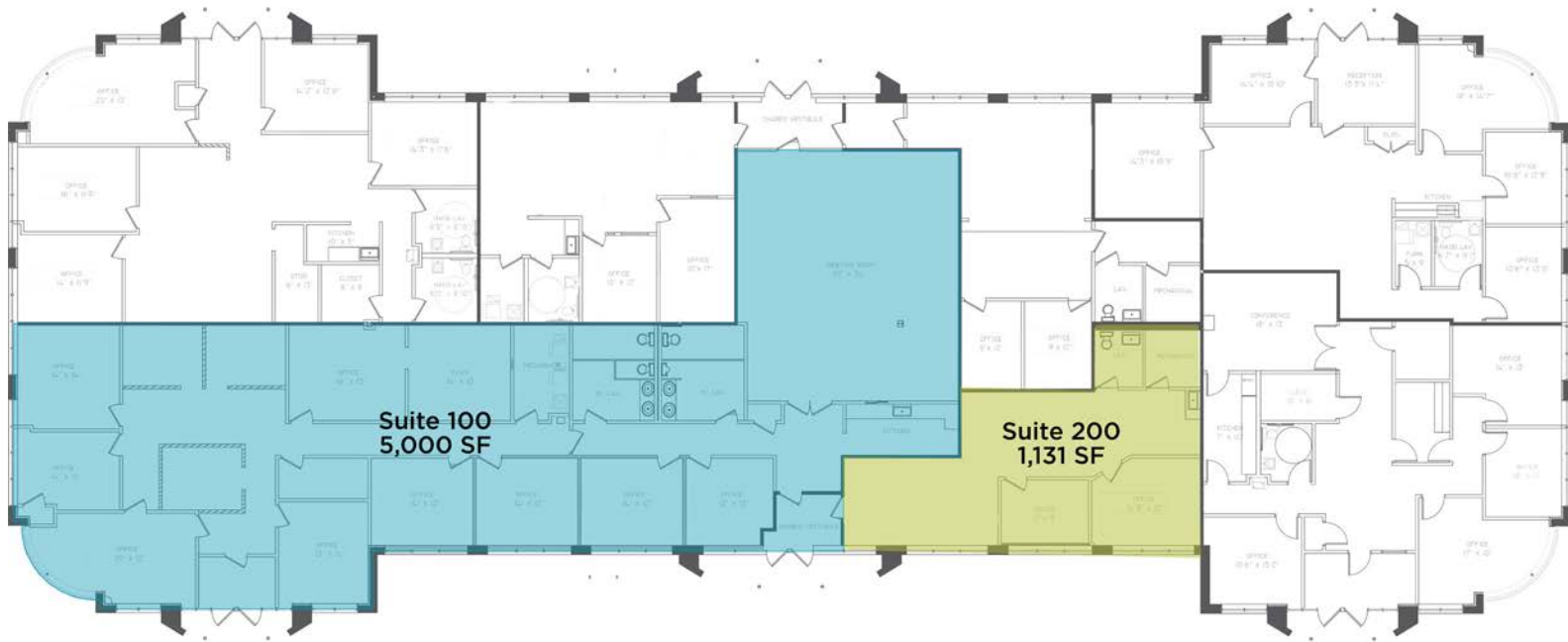


591 BOSTON MILLS ROAD

Suite 100 5,000 SF Available 6/1/2021

Suite 200 1,131 SF Available 1/1/2022

591 Boston Mills Road



MATT BEESLEY / Principal / mbeesley@crescorealestate.com / +1 216 525 1466

BOB GARBER, SIOR / Principal / bgarber@crescorealestate.com / +1 216 525 1467

3 Summit Park Drive, Suite 200
Cleveland, Ohio 44131

Main +1 216 520 1200

Fax +1 216 520 1828

crescorealestate.com

Independently Owned and Operated / A Member of the Cushman & Wakefield Alliance

Cushman & Wakefield Copyright 2021. No warranty or representation, express or implied, is made to the accuracy or completeness of the information contained herein, and same is submitted subject to errors, omissions, change of price, rental or other conditions, withdrawal without notice, and to any special listing conditions imposed by the property owner(s). As applicable, we make no representation as to the condition of the property (or properties) in question. A licensee at Cushman & Wakefield | CRESCO may have an interest in the client entity offering this property for sale.